

Nordex



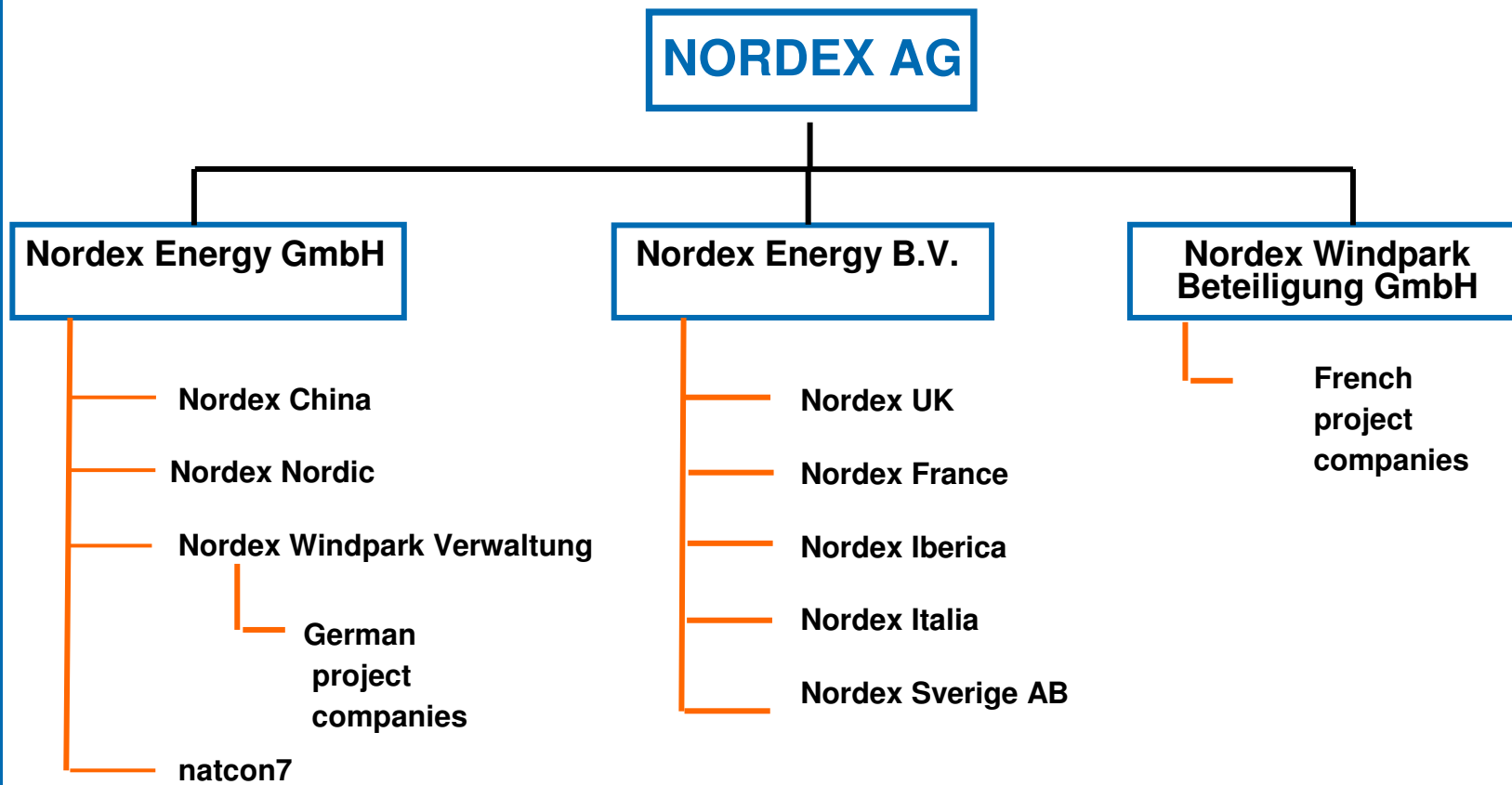
**Wind Power & Industry**  
**Kalmar**  
**26-27/5 2009**

# Milestones- 25 years Experience in Wind Business

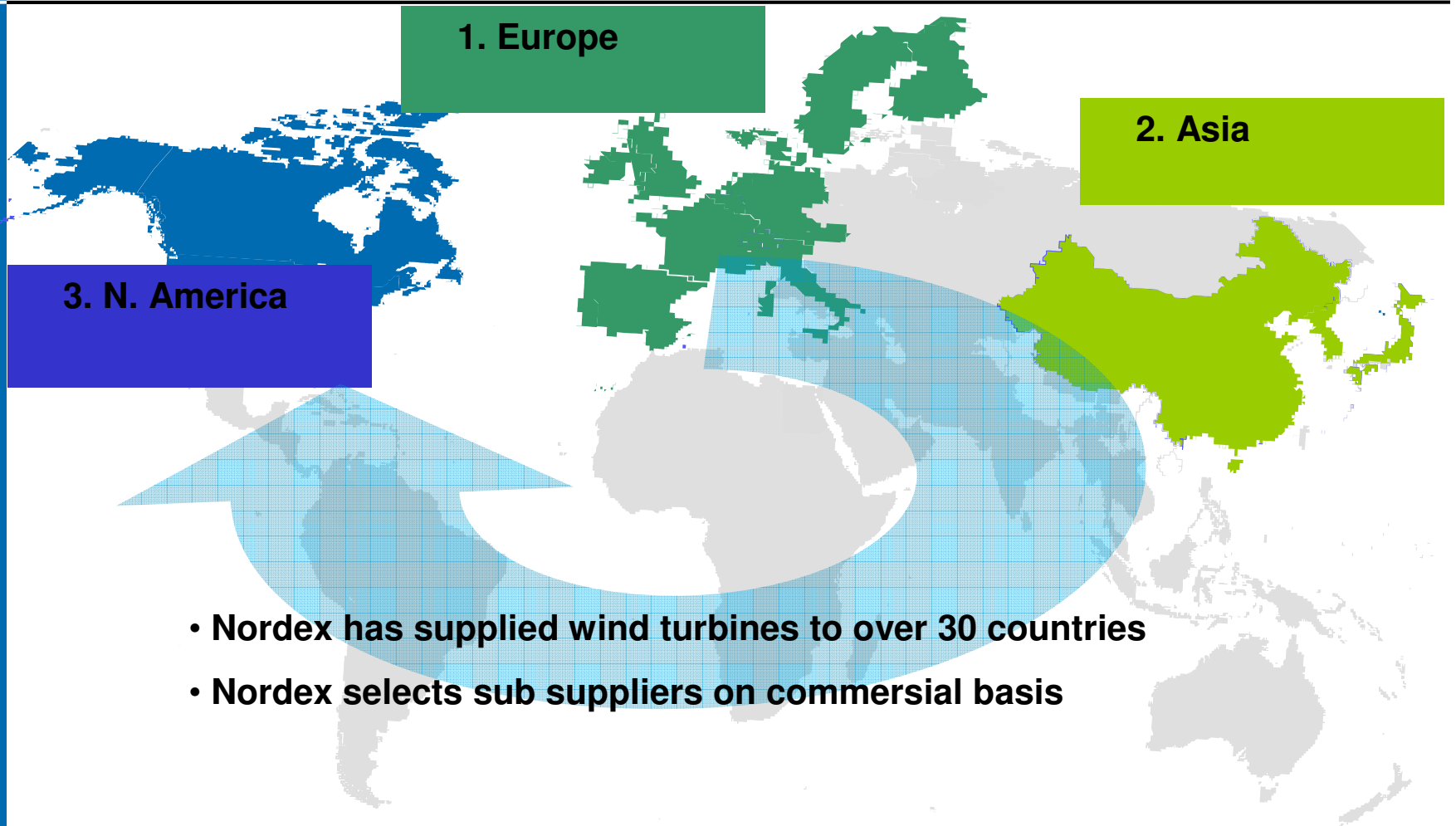


- 2009 Building of 70.000 m2 new production facility in Rostock
- 2006 Installation of Germany's 1st offshore turbine a N90/2500
- 2005 **Launch N90/2500 kW**
- 2003 Installation of the 2,000 Nordex turbine / 1. Offshore turbine installed
- 2001 Commencement of industrial rotor blade production
- 2000 Transfer of wind power activities to the new Nordex AG  
**Completion of the world's first series 2.5 megawatt wind turbine**
- 1999 Installation of the 1,000th Nordex turbine
- 1995 **Construction of the world's first series megawatt wind turbine**
- 1992 Establishment of production operations in Germany
- **1987 Production of the world's largest series wind turbine (250 kW)**
- 1985 Incorporation of Nordex in Denmark

# Nordex company structure



# Our markets



# Nordex Production

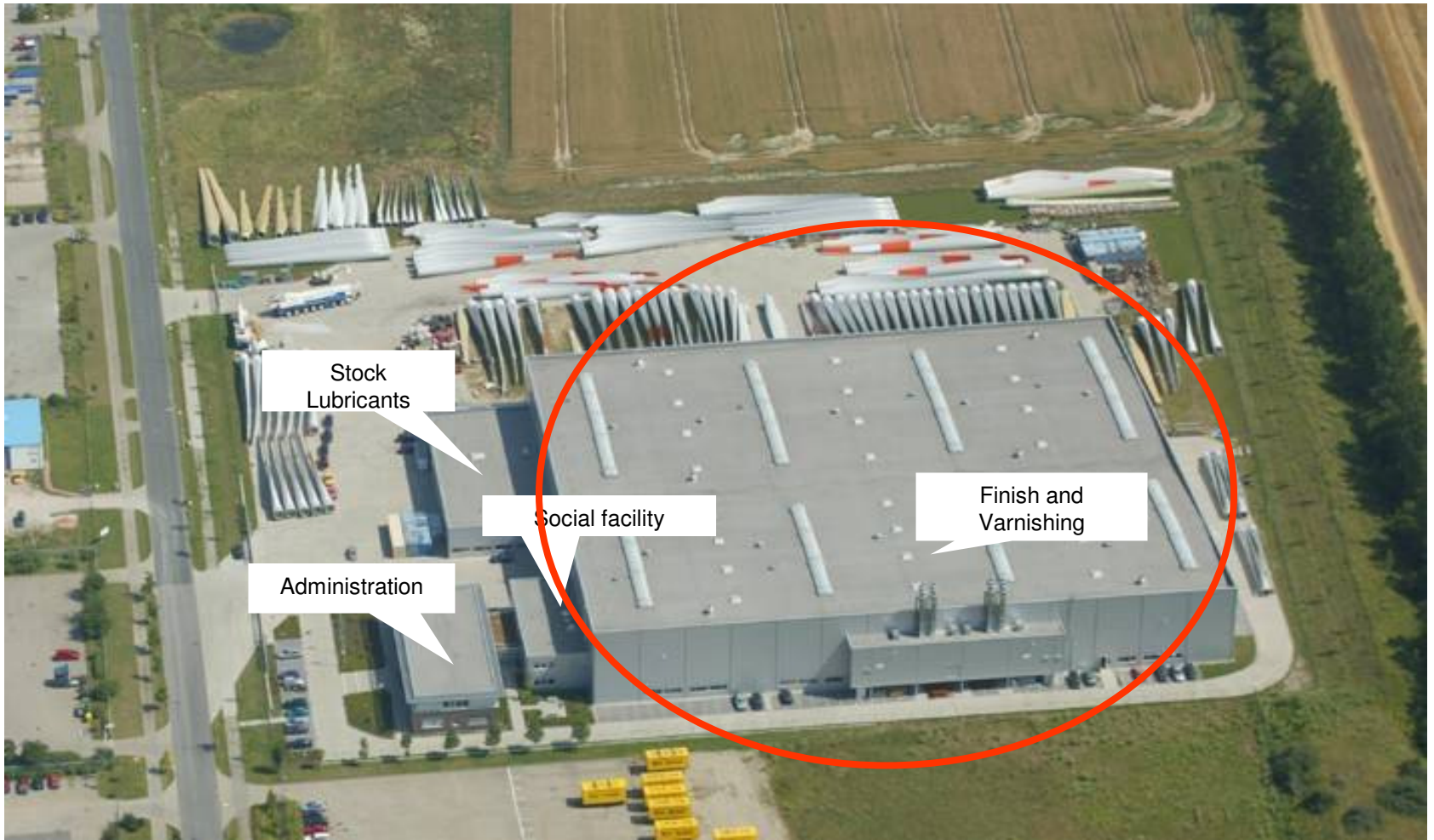


# Key Points of Production



- Production focus is on key components
  - Assembling of nacelle (incl. automatization)
  - Production of rotor blades
- Production facilities are in 3 regional areas with clear focus
  - a) Germany/Rostock:
    - high end products
    - new products
  - b) China:
    - mature products (currently 800 kW to 1,3 MW<sup>1</sup>)
  - c) USA, Chicago, Jonesborough
    - high end products

# Rotor Blade Facility „GVZ“ – Rostock

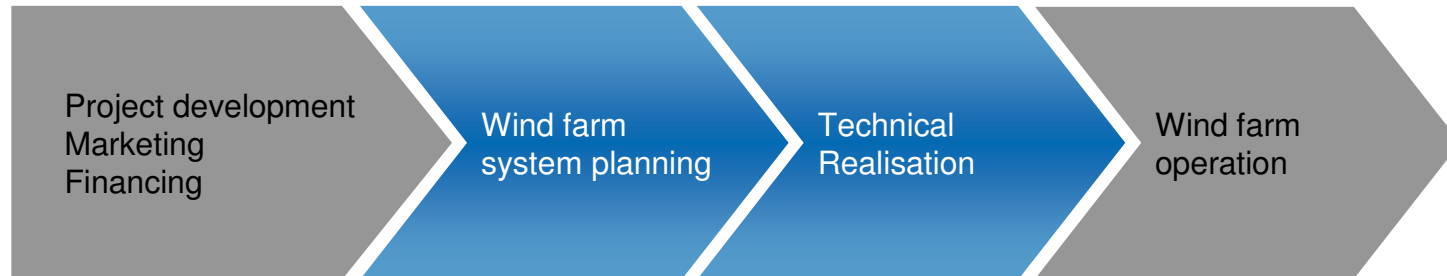


# Nordex production Rostock



|   |                                     |
|---|-------------------------------------|
| <b>Total amount to be invested:</b>         | 86 mn. Euro                         |
| <b>New hall area Rotor blade facility:</b>  | 26,900 sq.m.<br>(01/08 until 09/08) |
| <b>New hall area Turbines and cabinets:</b> | 25,600 sq.m.<br>(05/08 until 05/09) |
| <b>Total new hall area:</b>                 | 52,500 sq.m.                        |
| <b>Service and administration:</b>          | 10,100 sq.m.<br>(10/08 until 09/09) |
| <b>Total area</b>                           | App 70.000 sq.m                     |

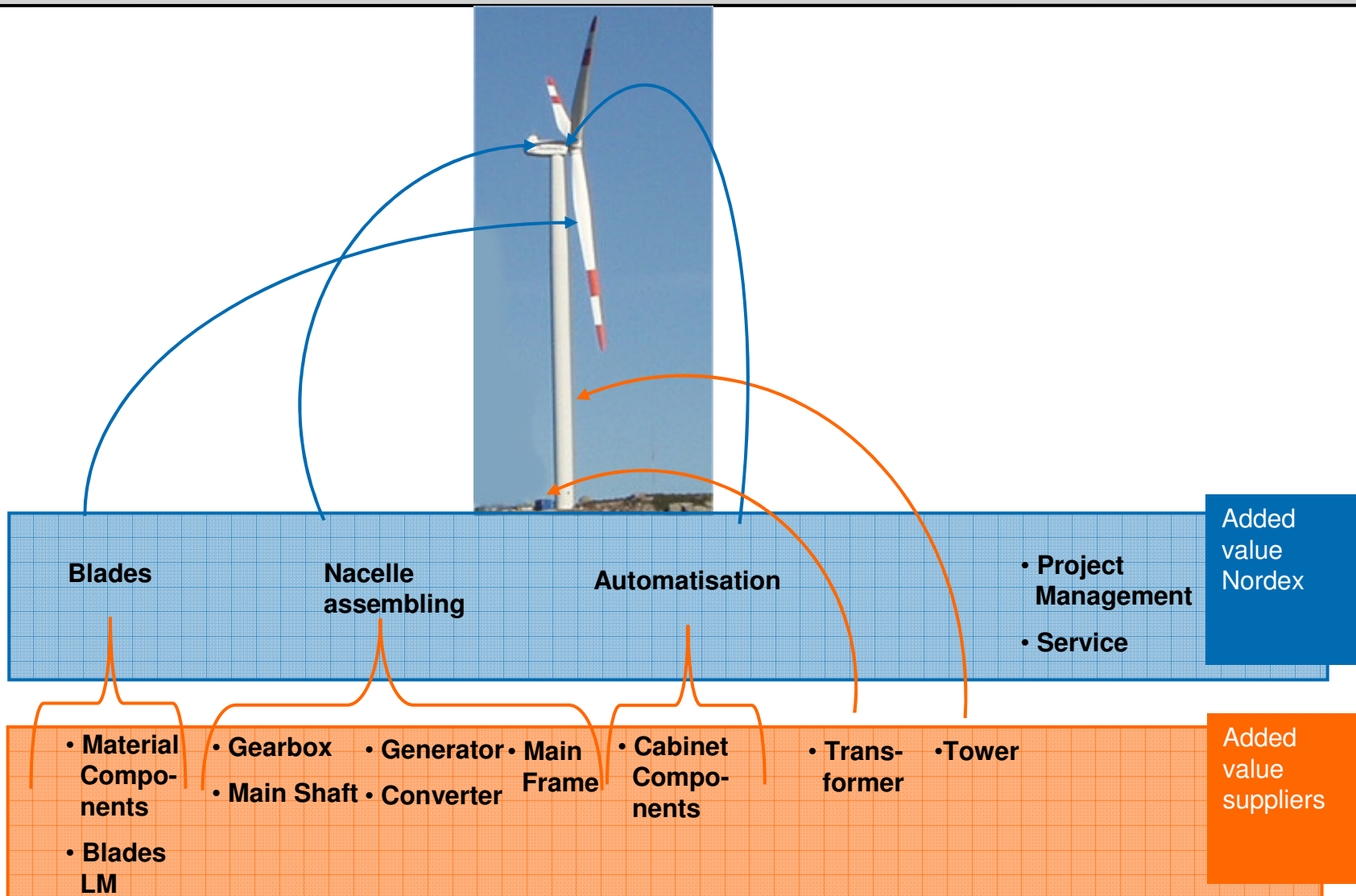
# Our Know-how



- Worldwide experience in technical planning of wind farm systems  
International customers: >80% of current order intake is from outside Germany
- Comprehensive competence in the system design and for key components (e.g. gearbox with strategic partners)

**NORDEX masters the entire technical value chain**

# Core Competences of Nordex: Integration of Components and Blade Production



# General Product Quality



# Example add on Condition Monitoring System



- Service operations can be planned in advance
- Total breakdowns and consequential damage to components are avoided
- As Nordex is able to order and provide spare parts, components, cranes and vehicles in good time, maintenance work on site is shortened,
- The date and time for exchanging a component can therefore be arranged in such a way that it falls at a time of the year when winds are not so high
- Inspection cycles can be extended



# Example sub supply Service

